

How to Glue Denim to a Tube

Contributed by:
Branden Wong

A.K.A [“Penl8the”](#)



This tutorial was downloaded from

<http://www.penturners.org>

The International Association of Penturners

How to Glue Denim to Tube

I have been receiving a few private messages (PM's) on how to glue denim to a tube. Here is my attempt to explain the process.

I use this process for the denim blank and the golf ball box/label blanks. You can see these blanks at the following URLs:

<http://www.penturnersparadise.ca/forum/showthread.php?t=4646>

<http://www.penturnersparadise.ca/forum/showthread.php?t=4643>

<http://www.penturnersparadise.ca/forum/showthread.php?t=4642>

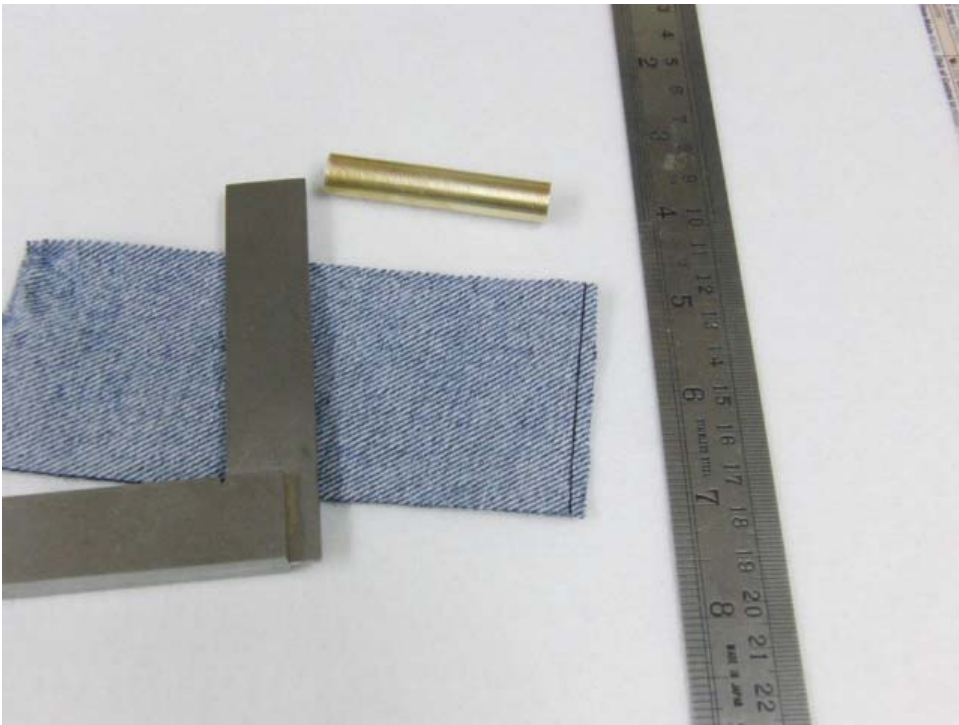
<http://www.penturners.org/forum/showthread.php?t=57680>

<http://www.penturners.org/forum/showthread.php?t=57637>

<http://www.penturners.org/forum/showthread.php?t=57660>



Leave a bit more cloth for the width.



After you cut the strip, use a square to get a straight line.





Make two lines/marks on the tube. Use them as a guide to line up to the edge of the cloth nearest you.



The marks were lined up to the nearest edge. In this photo I rolled the tube "up the cloth" just a smidge.



After you roll the tube up the cloth and see the marks on the tube (again), you know you have enough material to wrap around the tube. But, but ... give it another 1/8" extra for trimming later.



Cut along this line.



I hope you can see a line of thick CA on the tube. Now roll the tube back toward you/toward the near edge. Hold it for a few seconds.

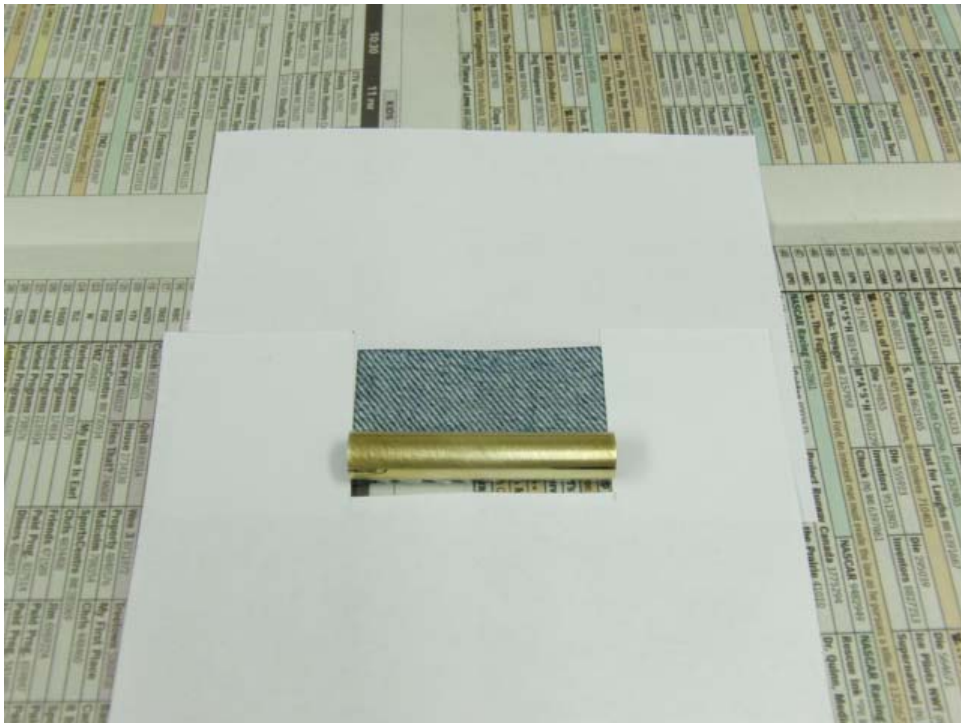
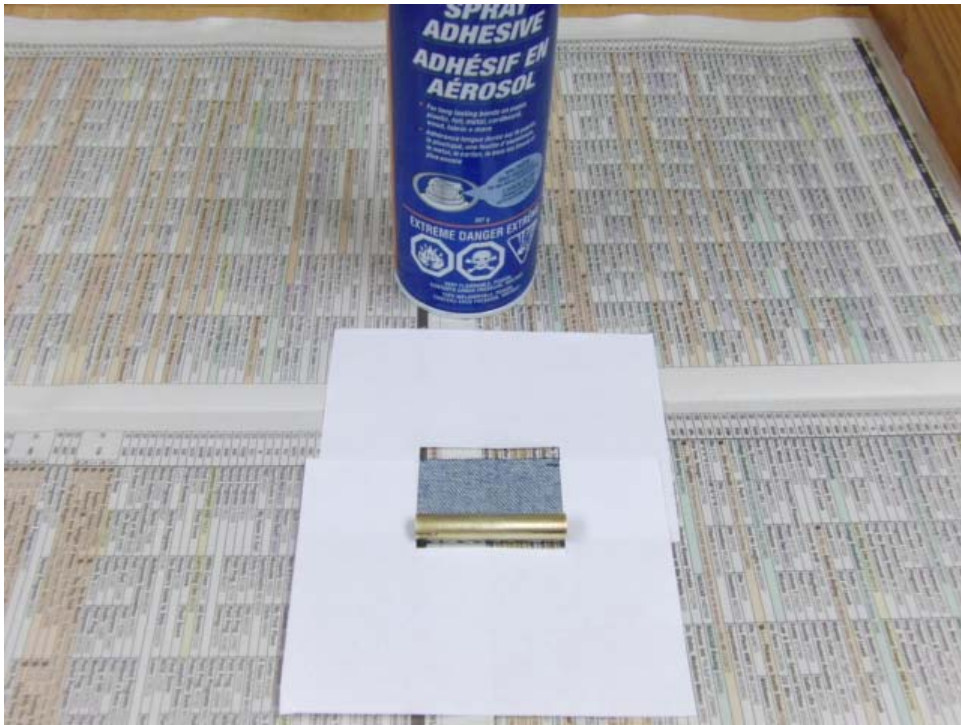


This is to show that the "glue is holding the near edge". The green masking tape was to hold the tube so I could take the picture.

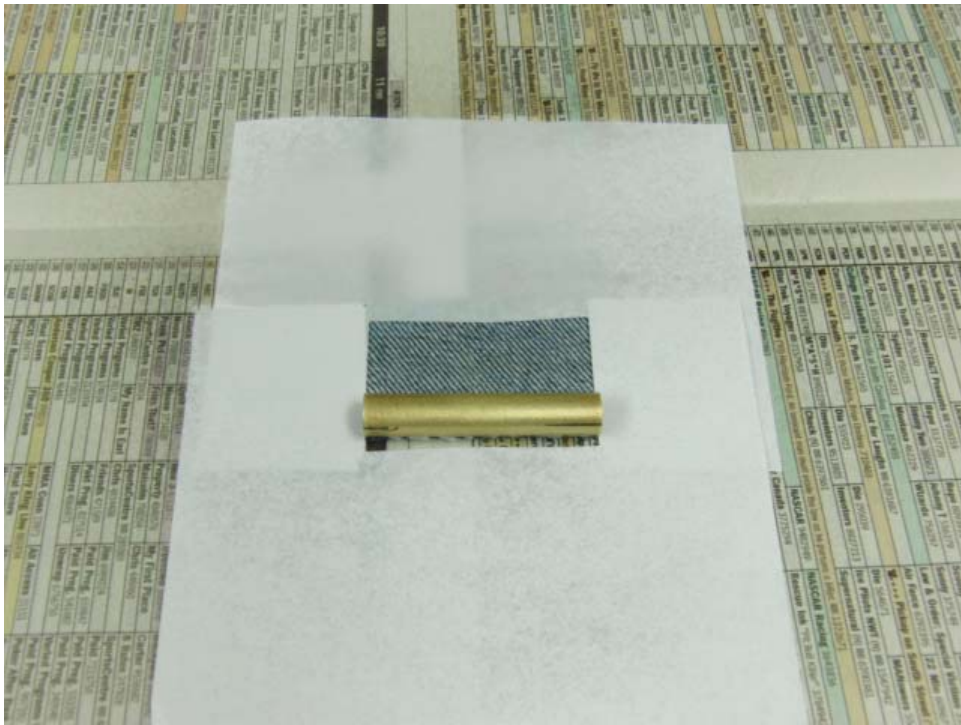


The next few pictures are to show make a "sliding window" for spray adhesive.





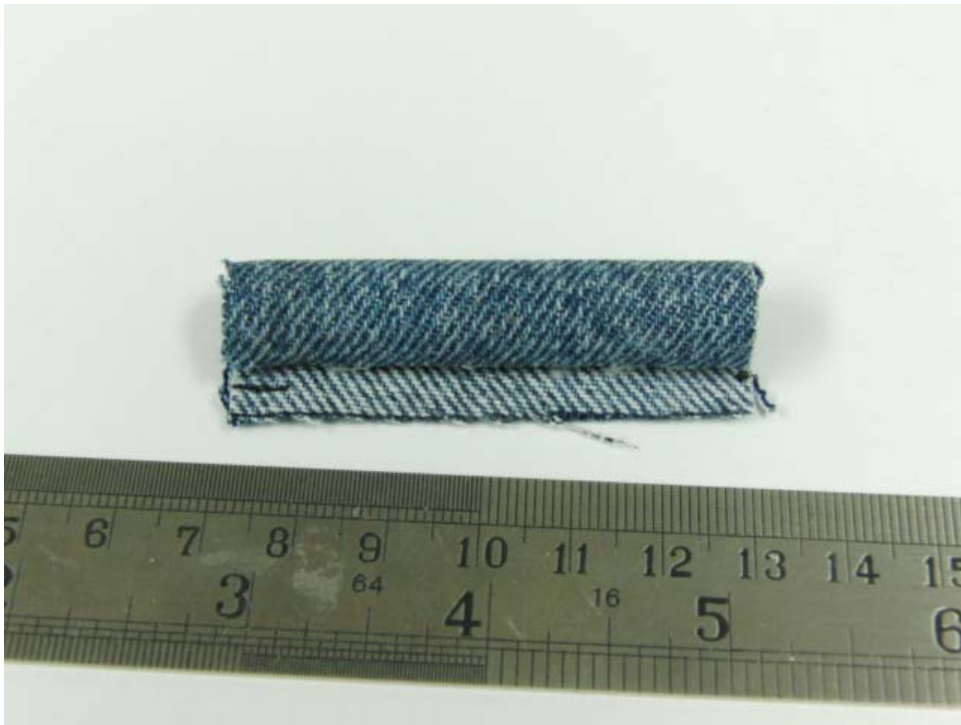
Now slide the upper part of the slide window about 1/8". Remember the extra 1/8"?



Spray the cloth and tube with spray adhesive. Go easy, do not spray too much. Put on your rubber gloves and roll the tube up the cloth.



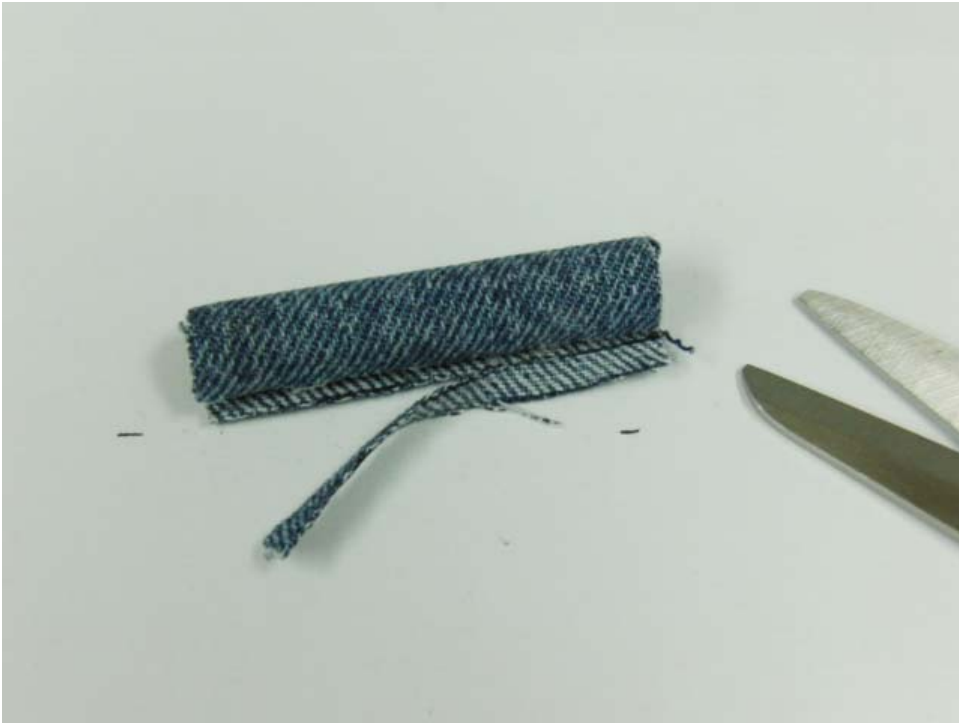
Here it shows the tube is glued except the 1/8"



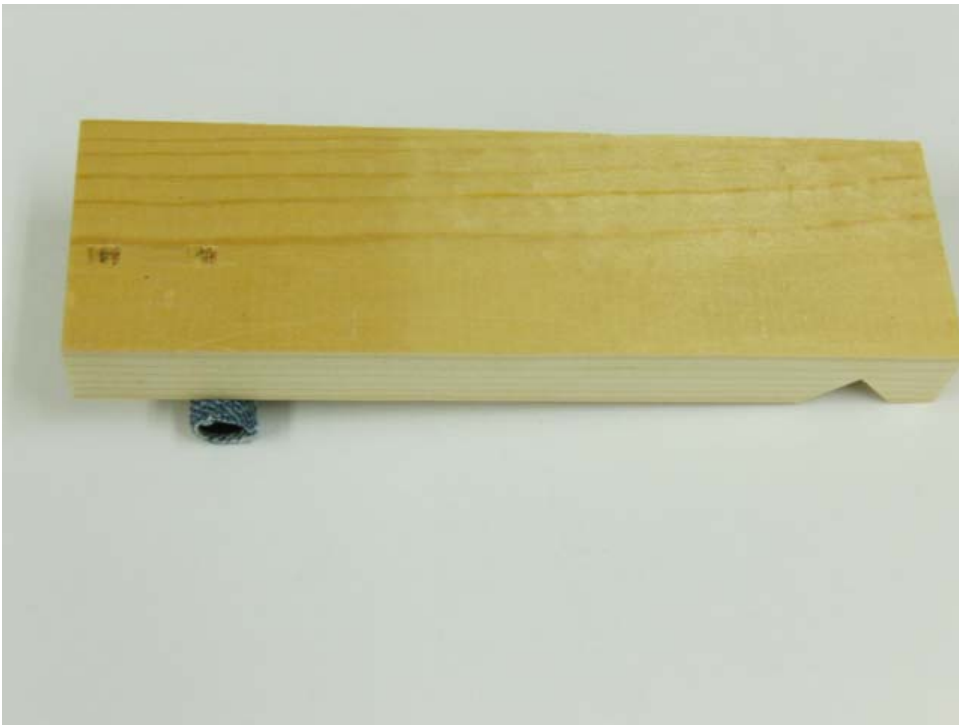
Find the first edge of the tube, make a mark on each side edge.



Draw a line.

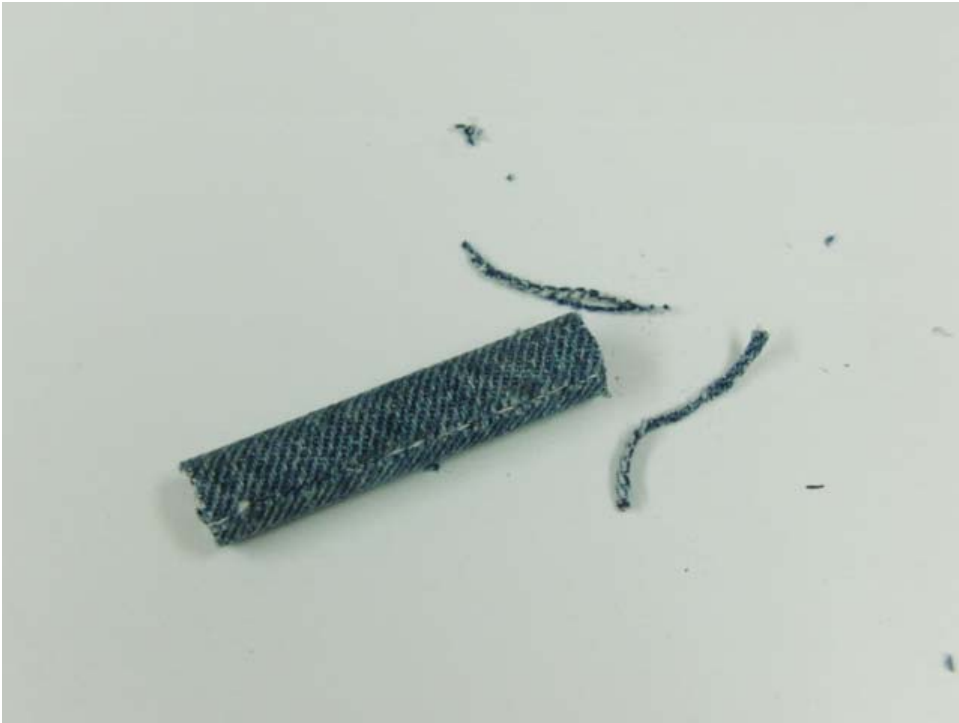


There was enough spray glue on the tube. I just press the two edge together. Pretty good fit, I might say.



Use a piece of softwood to roll the tube (gently) to make sure the glue has good contact.





Now both ends had a good haircut.

And that's it.